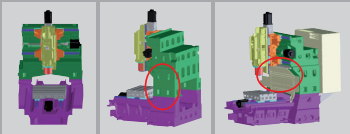


SPECIFICATIONS		MB-46V		MB-56V		MB-66V	
TRAVELS	Max Machining Volume	560x460x460 (22.05x18.11x18.11)		1,050x560x460 (41.34x22.05x18.11)		1150x660x660 (59.06x25.98x25.98)	
	X Axis - Ram-Saddle - R-L	560 (22.05) [45 (1.77) Guideway]		1,050 (41.34) [45 (1.77) Guideway]		1,500 (59.06)	
	Y Axis - Table F-R	460 (18.11) [45 (1.77) Guideway]		560 (22.05) [53 (2.09) Guideway]		660 (25.98)	
	Z Axis - Spindlehead U-D	460 (18.11) [45 (1.77) Guideway]		460 (18.11) [45 (1.77) Guideway]		660 (25.98)	
TABLE	Table [Pallet] Size	460x760 (18.11x29.92)		560x1,300 (22.05x51.18)		1,530 x 660 (60.24 x 25.98)	
	Max Load Capacity	500 (1,100)		900 (1,980)		1,500 (3,300)	
SPINDLES	Available Spindle Selections	8k VA 15k VA		20kVA 25k VA		6k VB 12k VB	
	Spindle Speed	50-8,000		50-15,000		50-20,000	
	Spindle Bore Taper	NT40		NT40 [HSK-A63]		HSK-A63 [BIG+]	
	Bearing Inner Diameter	Ø 70 (Ø 2.76)		Ø 70 (Ø 2.76)		Ø 60 (Ø 2.36)	
	Spindle Nose Diameter	Ø 80 (Ø 3.15)		Ø 90 (Ø 3.54)		Ø 90 (Ø 3.54)	
	Spindle Max Output {10 Min.}	11 (15)		22 (30)		30 (40)	
MOTOR	Spindle Max Output {Cont.}	7.5 (10)		18.5 (24)		22 (30)	
	Torque Maximum {10 Minute}	198 (146.2)		199 (147)		57 (42)	
	Torque Maximum {Continuous}	135.1 (99.6)		146 (108)		42 (31)	
	Torque Maximum {Continuous}	135.1 (99.6)		146 (108)		42 (31)	
ATC	Tool Shank V-Flange Type	CAT40		NT40 [HSK]		HSK-A63 [BIG+]	
	Max Tool Dia (w/wo Adjacent)	Ø 90 (Ø 3.54) / Ø 125 (Ø 4.92)		Ø 90 (Ø 3.54) / Ø 125 (Ø 4.92)		Ø 90 (Ø 3.54) / Ø 125 (Ø 4.92)	
	Max Tool Weight	8 (17.6)		8 (17.6)		8 (17.6)	
	Tool Changing Time T-T/C-C	T-T: 1.2 / C-C: 3.2 (Nominal)		T-T: 1.2 / C-C: 3.2 (Nominal)		T-T: 1.2 / C-C: 3.2 (nominal)	
	Max Tool Length	300 (11.81)		300 (11.81)		300 (11.81)	
	Magazine Capacity	MB-46: 20 Base [opt. 32]		MB-56: 20 Base [opt. 32, 48-NT40 Only]		MB-66: 20 Base [opt. 32, 48-NT40 Only]	
FEED	Rapid Traverse, X, Y / Z	40 / 32 (1,574 / 1,259.8)		40 / 32 (1,574 / 1,259.8)		X-Y: 40 (1575) Z: 32 (1260)	
	Acc / Dec	X, Y: 0.7G / Z: 0.5G		X, Y: 0.7G / Z: 0.5G		X, Y: 0.7G / Z: 0.5G	
	Max Cutting Feedrate X : Y : Z	1-32,000 (0.04-1,259.8)		1-32,000 (0.04-1,259.8)		X-Y-Z:32 (1260)	
SIZE	Machine Height	2,750 (108.26)		2,750 (108.26)		3,295 (129.72)	
	Floor Space WxD	1,900x2,700 (74.80x106.30)		2,470x3,000 (97.24x118.34)		2,940 X 3,250 (115.75 X 127.95)	
	Net Weight - w/Std ATC+Column	VA: 6,000 (13,200) VB: 6,200 (13,640)		VA: 7,500 (16,500) VB: 7,700 (16,940)		11,800 (25,960) 12,000 (26,400)	
ACC	Positioning Accuracy	X,Y & Z: +/-0.004 (0.000160) Full Stroke [JIS Method]		X,Y & Z: +/-0.004 (0.000160) Full Stroke [JIS Method]		X,Y & Z: +/-0.004 (0.000160) Full Stroke [JIS Method]	
	Repeatable Positioning Accuracy	X,Y & Z: +/-0.0015 (+/-0.000059) [JIS Method]		X,Y & Z: +/-0.0015 (+/-0.000059) [JIS Method]		X,Y & Z: +/-0.0015 (+/-0.000059) [JIS Method]	

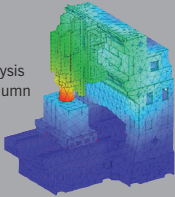
* Spindle Selections 8k VA, 15k VA, 25k VA, 35k VA, 6k VB and 12k VB are available for all machines.

SPINDLE SELECTION



Thermostable Construction:
 -Thermally symmetric and "box-build" structure
 -Thermally balanced structure
 -Cooling unit and NC control box designed to dissipate heat
 -Structure that isolates heat from coolant and chips

Rigid Structure:
 -3D-CAD and FEM analysis
 -High rigidity double column structure



X-Y TRAVEL
22x18



X-Y TRAVEL
41x22



X-Y TRAVEL
59x26

