



OkumaAppStore



How to Install an Okuma Machine Tool App

The process of downloading and installing machine tool apps from the Okuma App Store is simple to perform. If you've ever installed software on a PC using Windows®, you'll find this to be a similar process. This step-by-step guide is designed to get you up and running with apps as quickly as possible.

Machine Tool App Installation: Step-By-Step Guide


1



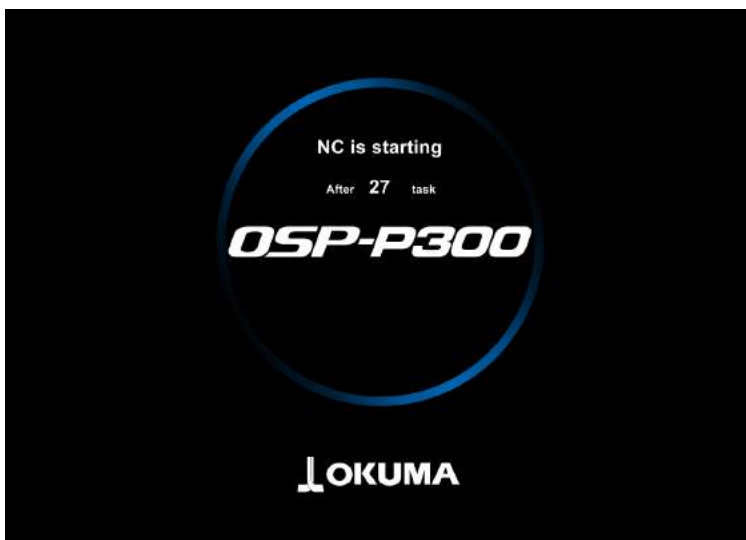
 Wait for Windows to boot up on your control.

2



 When the Welcome screen is displayed, click anywhere on the screen.

3



NOTE: If you wait too long to click the screen, the NC will begin booting up, and you will need to start the process over.

4



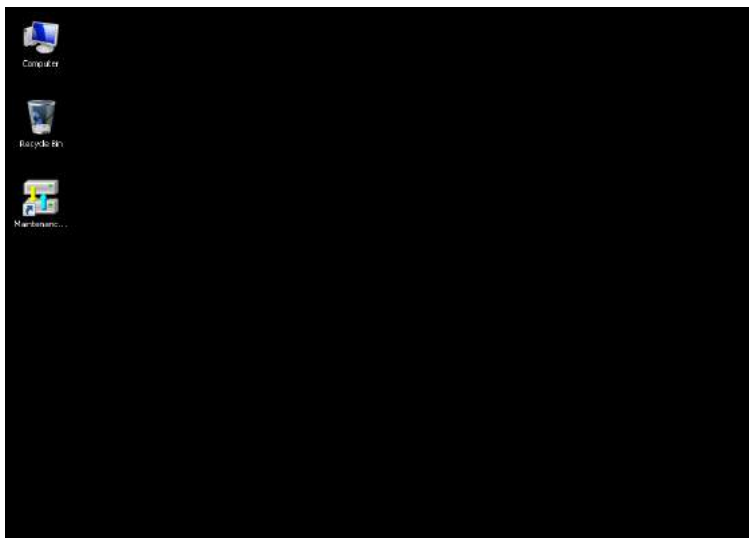
Click the Escape key.

5



Then click the Cancel button at the upper right on your screen.

6



NOTE: You will now see the Windows® screen.

7



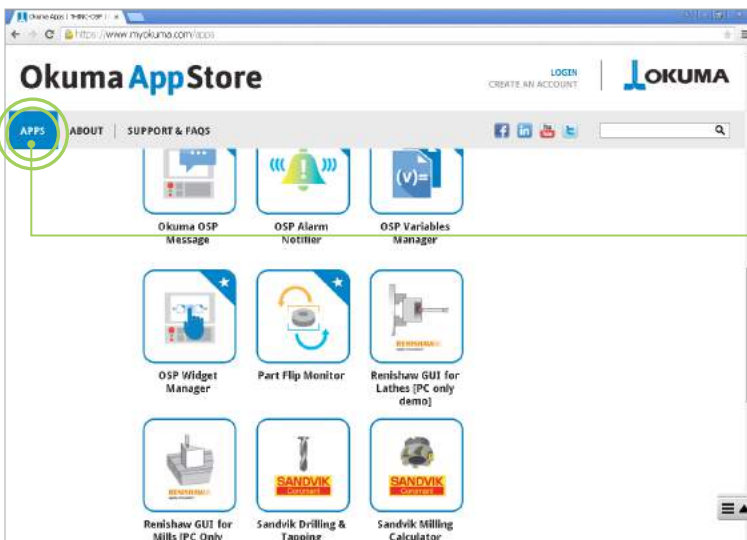
NOTE: If you see the control screen, you are not in Windows® only mode and will need to start the process over.

8



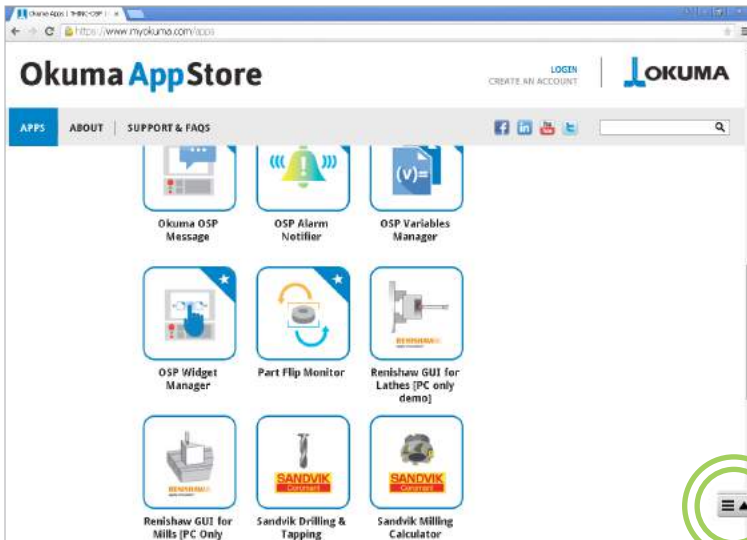
Access the Okuma App Store at www.myokuma.com (we recommend Google Chrome).

9



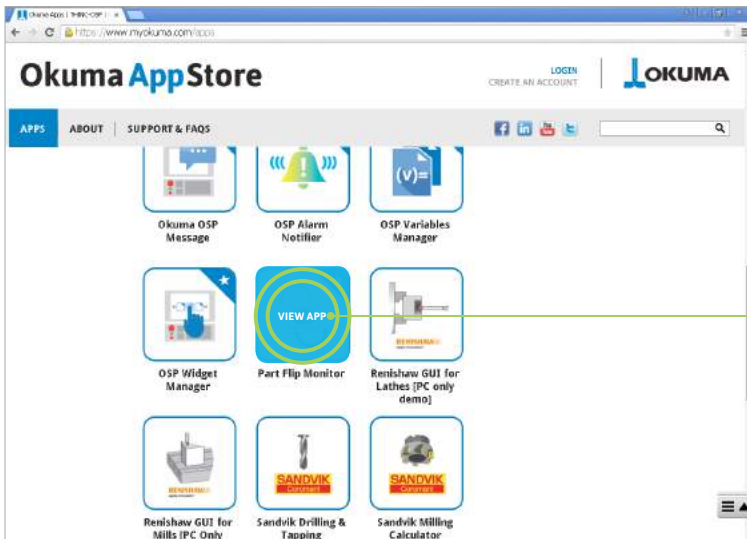
Go to the "Apps" section.

10



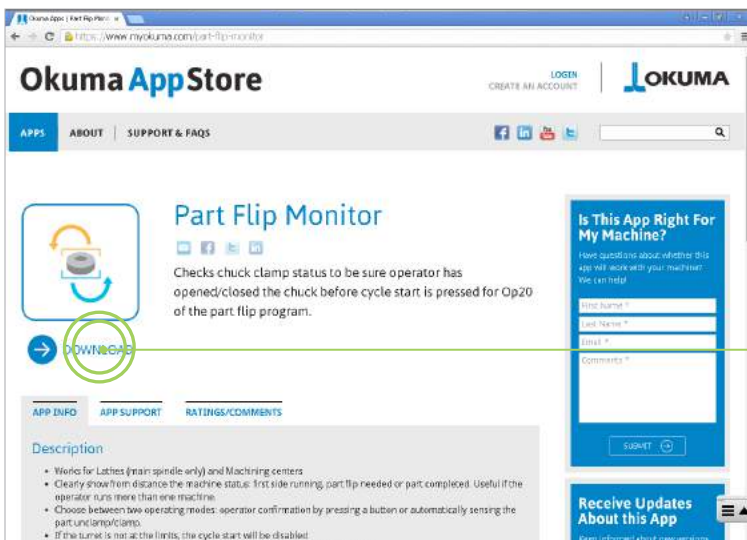
Scroll through the page to find the application you want.

11



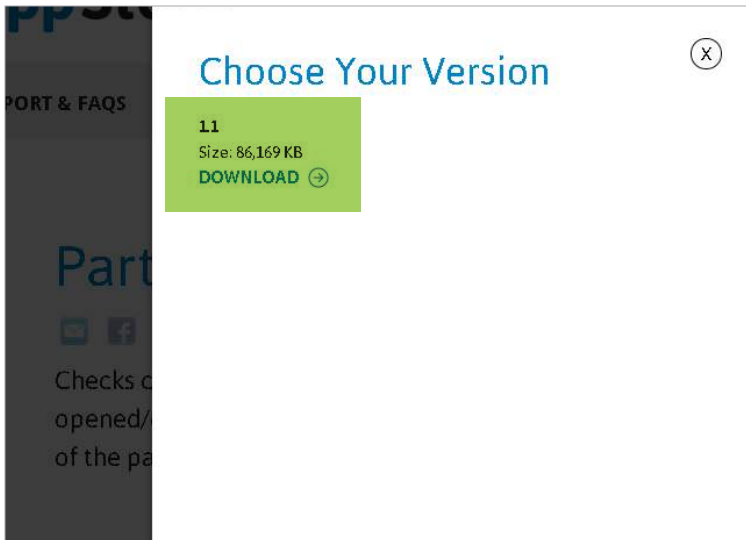
Click on your desired App icon to go to the App page (Part Flip Monitor is shown here, as an example).

12



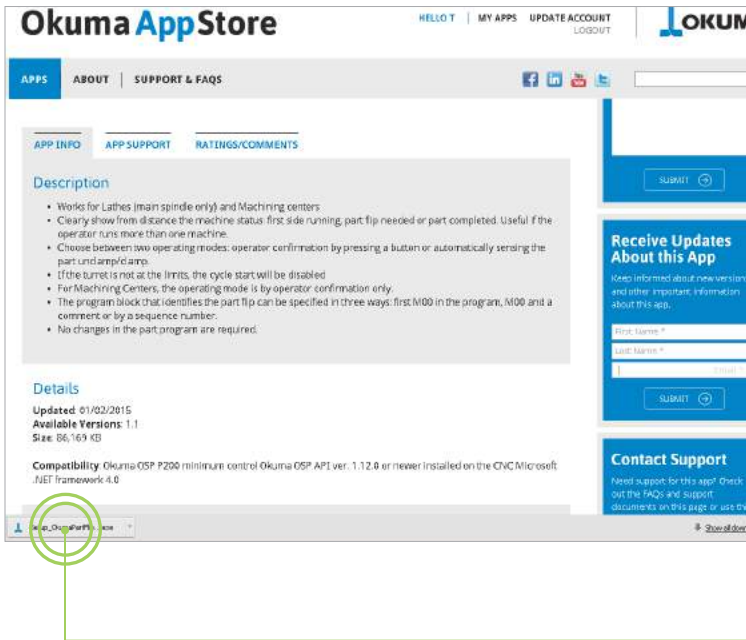
Click on Download.

13



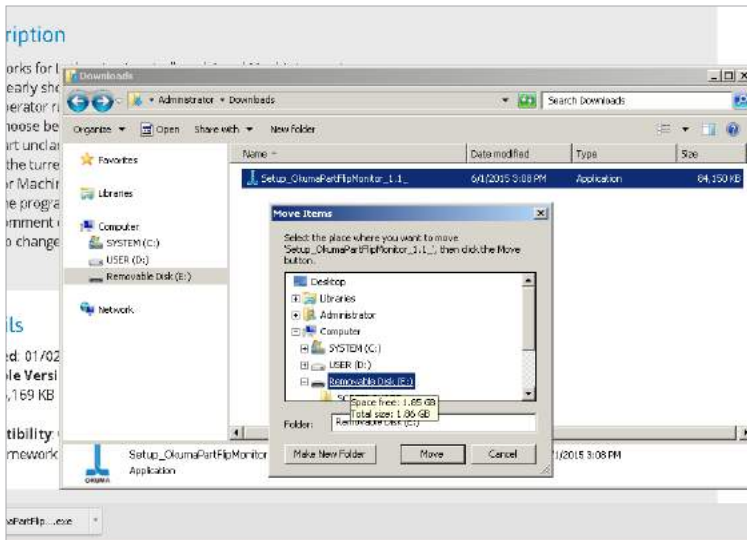
Select the version you wish to download.

14

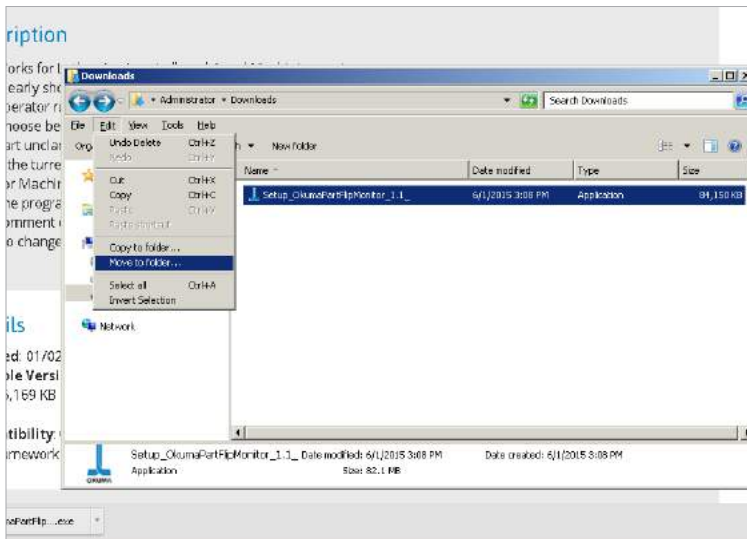


In Google Chrome, find the download notification near the bottom of the browser, and click on it to open the installer.

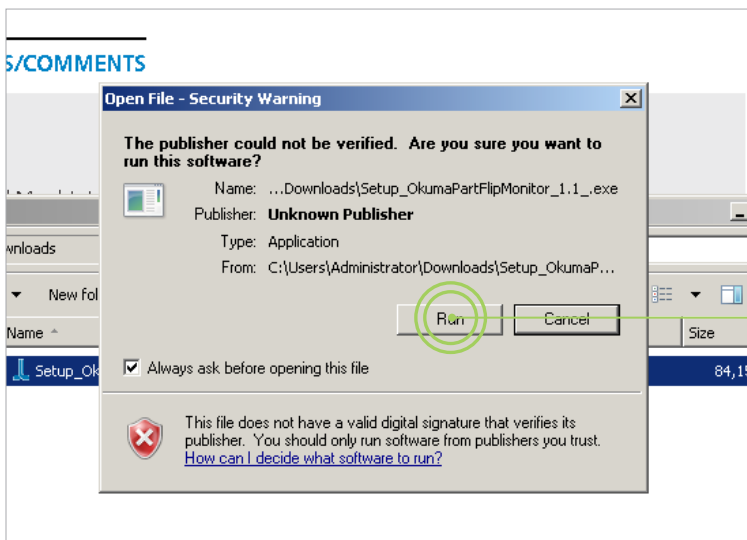
15



16



17



NOTE: If your machine is not connected directly to the internet, you can perform the download on your desktop PC, then browse to your downloads folder and copy the file to a USB memory stick, then take the file to your machine for installation.



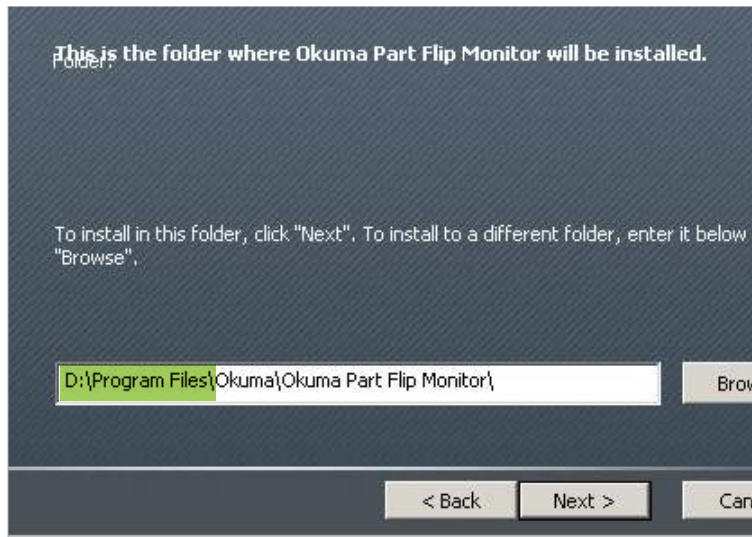
If you see an Open File — Security Warning, go ahead and click Run. All of the applications on the Okuma App Store have been verified by Okuma quality control.



18



On the Welcome screen, click Next.



19



Here you can choose the installation path. We recommend using the default installation path **“D:\Program Files”** as opposed to **“C:\Program Files”** when prompted.



20



Click Install.

21



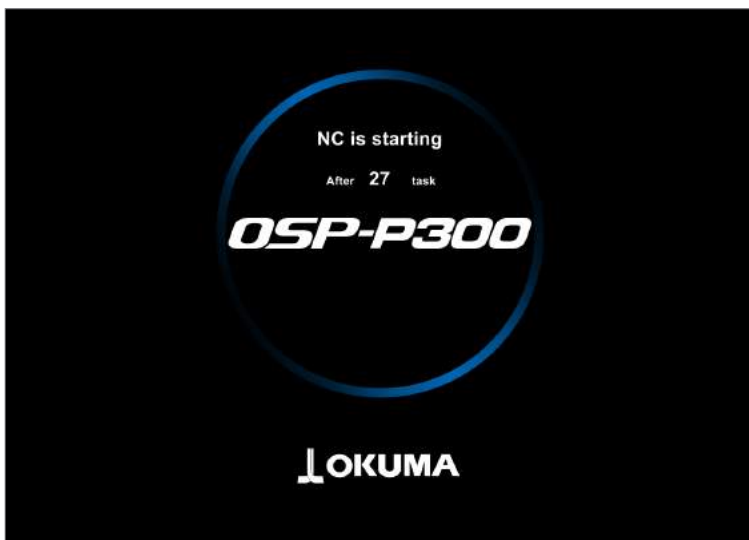
NOTE: If you see an Open File — Security Warning click “Run.”

22



Click Finish, and your app is now installed.

23



Some applications rely on the Okuma API, and therefore require a machine restart at this point. In this case, shut the machine down and allow it to reboot normally.

24



Go to the function key menu, look for the app icon, and click open.

25



Your application is now installed and ready to use.

To view documentation for your app(s), you may need to install Adobe Acrobat Reader, which can be found at get.adobe.com/reader. If your machine is not networked, you can download the appropriate version of Adobe Acrobat Reader at get.adobe.com/reader/enterprise.

To see a video demonstration of this process, please visit the “Okuma America Corporation” YouTube channel, go to the playlist titled “App Videos,” and click on “How to Install an Okuma Machine Tool App.” For individual inquiries, contact your local Okuma distributor or schedule an appointment to visit us at one of the following locations:

Okuma America Corporation

11900 Westhall Drive
Charlotte, NC 28278
P 704.588.7000
F 704.588.6503

Partners in THINC

12428 Sam Neely Road
Charlotte, NC 28278
P 704.587.6789
F 704.587.7669

The Okuma Technical Center

4727 S. Pinemont,
Suite 200
Houston, TX 77041
P 704.504.6104
F 704.504.6105

The Okuma Technical Center at Morris Midwest

68 Congress Circle W
Roselle, IL 60172
P 630.351.1901
F 630.351.1912